



## Earth Day 2026 Exhibitor Frequently Asked Questions & Liability Waiver

### Greater Washington Region Clean Cities Coalition's (GWRCCC) Earth Day Walk and Alternative Fuel Vehicle Display & Green Expo

National Mall, Washington, D.C. April 18, 2026

#### Liability Waiver

By participating in the GWRCCC Earth Day Walk, Alternative Fuel Vehicle Display & Green Expo on Saturday, April 18, 2026, by having a Green Expo Exhibit you agree to the following terms:

1. **Assumption of Risk:** Participants acknowledge that they are on National Park Service property and accept all risks associated with participation, including but not limited to property damage, injury, or accidents.
2. **Release of Liability:** Participants release the Greater Washington Region Clean Cities Coalition (GWRCCC), event sponsors, volunteers, and affiliates from any claims or liabilities arising from participation in the event, including but not limited to injury, damage, or loss.
3. **Indemnification:** Participants agree to indemnify and hold harmless GWRCCC and its affiliates against any claims arising from their actions during the event.
4. **Compliance:** Participants must comply with all Washington, D.C., traffic laws, National Park Service regulations, and event-specific instructions provided by GWRCCC staff.
5. **Drop-off, Load-in, and Load-out Area:** Participants dropping off and picking up exhibit materials must be licensed drivers and insured and comply with all Washington, D.C. traffic laws, National Park Service regulations, and event-specific instructions provided by GWRCCC staff. Participants agree to indemnify and hold harmless GWRCCC and its affiliates against any claims arising from their actions during these times during the event.

By signing below, you acknowledge that you have read, understood, and agreed to this waiver:

Name: \_\_\_\_\_ Title: \_\_\_\_\_

Organization: \_\_\_\_\_

Address: \_\_\_\_\_

Telephone Number: \_\_\_\_\_ Mobile Number: \_\_\_\_\_

Signature: \_\_\_\_\_ (electronic via email timestamped)

Date: \_\_\_\_\_



## **Green Expo Exhibitor Information Review Checklist**

1. Have you reviewed and signed the waiver and returned it to the Green Expo Exhibitor coordinator, Kim Harden, 443-860-9765, [kimberlyharden@gwrccc.org](mailto:kimberlyharden@gwrccc.org)?
2. Confirm your section, space assignment, and load-in/load-out instructions and times with the Green Expo Exhibit Coordinator Kim Harden, 443-860-9765, [kimberlyharden@gwrccc.org](mailto:kimberlyharden@gwrccc.org).
3. Review the [www.gwrccc.org/earth-day/](http://www.gwrccc.org/earth-day/) event page with Frequently Asked Questions, the schedule, logistics, public transportation, parking, emergency contacts, health and safety, and tips for visiting the Mall.

## **Instructions for Green Expo Exhibitors**

### **Event Overview**

- **Date & Time:** Saturday, April 18, 2026; 10:00 AM - 1:00 PM EST (rain or shine).
- **Location:** The National Mall (See Section Instructions)

### **Regulations & Requirements**

- Exhibits will only be in designated and assigned spaces on the main walkway, not on the grass. The exhibit area will be open to the public from 10:00 AM to 3:00 PM. Walkers begin registration at 8:00 AM. Request assistance from volunteers during load-in/load-out in the designated drop-off area. There are no reserved parking spots for exhibitors. Information about parking is provided below and in the Exhibitor FAQ document.
- Follow all Washington, D.C. traffic laws and remain mindful of pedestrians. Streets will not be blocked off; volunteers will assist with intersections.
- In a medical emergency, call 911 immediately and notify the Exhibitor volunteer lead.

## **Sections 2: Exhibitor Spaces 1-70**

## **Section 4: Exhibitor Spaces 71-112 (See Map)**

### **Handout Materials**

Please read the [Exhibitor FAQ document](#) before you print materials or pack for the event. If you have questions about handout materials, please email [info@gwrccc.org](mailto:info@gwrccc.org).

Selling products or services is prohibited on the National Mall and during the event. Exhibitors are allowed to provide information about their products, services, and/or companies or organizations related to sustainable transportation, energy, environmental public education, and awareness. To respect the National Park Service's sustainability plans and in honor of Earth Day, we suggest using a QR code to direct the public to a part of your website that contains public education and awareness information—not sales. Prepare your website social media to support the goals of our collective public education campaigns.

### **GWRCCC Social Media Links**



Instagram: <https://www.instagram.com/gwrccc/>

Twitter/X: <https://x.com/GWRCCC>

TikTok: <https://www.tiktok.com/@gwrccc1>

YouTube: <http://www.youtube.com/@greaterwashingtonregioncle7936>

Facebook: <https://www.facebook.com/GWRCCC>

LinkedIn: [linkedin.com/in/greater-washington-region-clean-cities-coalition-gwrccc-939792225](https://www.linkedin.com/in/greater-washington-region-clean-cities-coalition-gwrccc-939792225)

## Load-In and Load-Out Logistics

Green Expo Exhibitor exhibit tables will be in Sections 2 and 4. (See Figure 1)

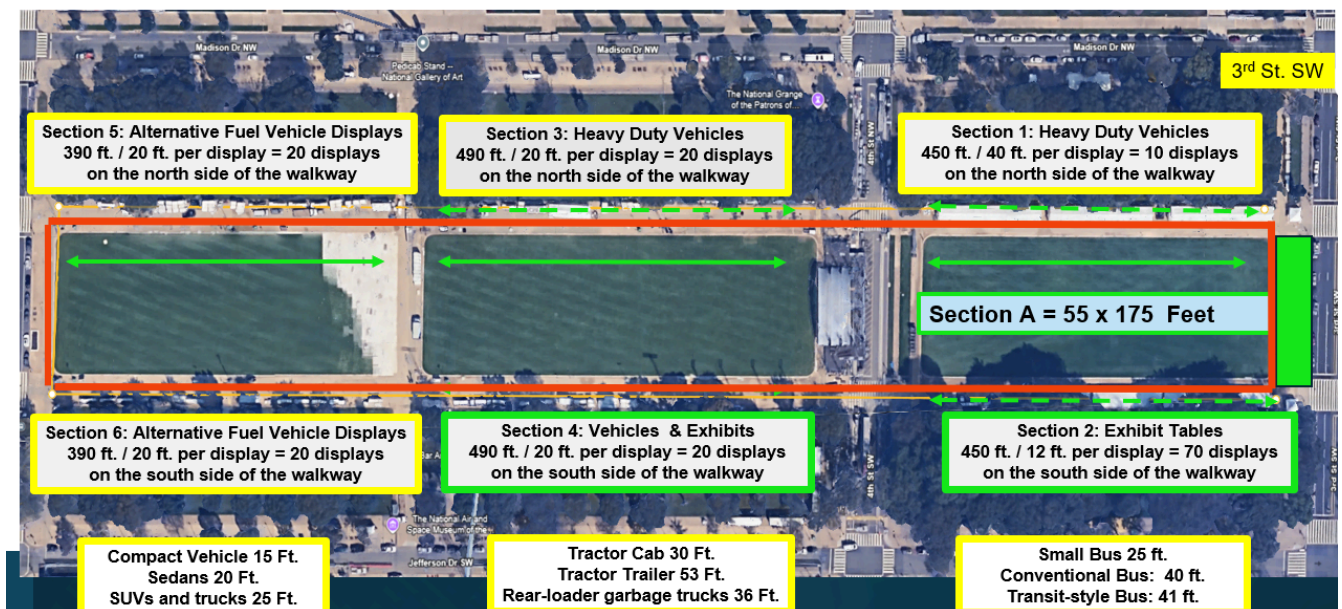
Load-in begins at 7:00 AM on Saturday, April 18, 2026. The drop-off areas for load-in and load-out are on the corners of 3rd St. SW and Madison Ave. NW on the north side and 3rd St SW and Jefferson Dr. on the south side. (See Figure 2) Walkers will begin registering at 8:00 AM. Please have your exhibit space ready by 9:30 AM.

Exhibit tables will be on both sides of the main walkway, off the grass in Section 2. The exhibit tables in Section 4 will be on the south side and shared with alternative fuel vehicle displays on the other side of the walkway (grass side). (See Figures 3 and 4).

The Green Expo Exhibit Coordinator will assign and mark exhibit spaces with signs. There is about 6-10 feet of space between exhibit spaces.

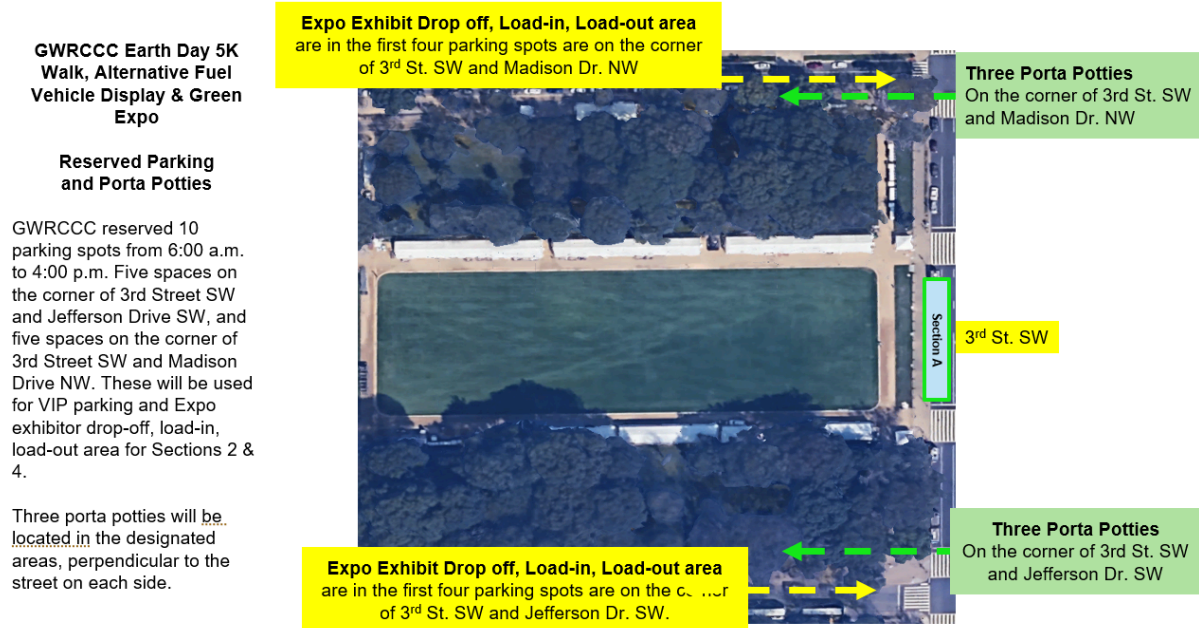
## GWRCCC Earth Day 5K Walk, Alternative Fuel Vehicle Display & Green Expo Sections Numbers and Usage

The Alternative Fuel Vehicle Display areas are in yellow boxed sections, and the Green Expo exhibits are in green boxed sections. Section 4 is a hybrid. Section A will contain a stage and VIP tent, allowing the westside sidewalk on 3<sup>rd</sup> Street SW going north and south to remain open.





**Figure 2: Expo Exhibitor Drop-off, Load-in, and Load-out Areas**

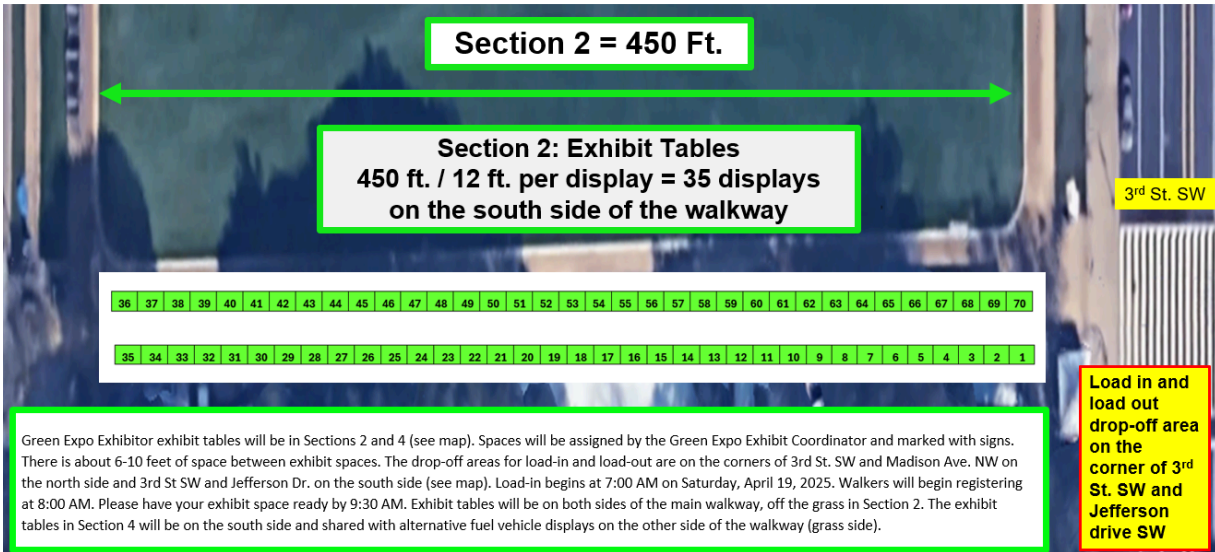


**Figure 3: Expo Exhibitor Section 2**



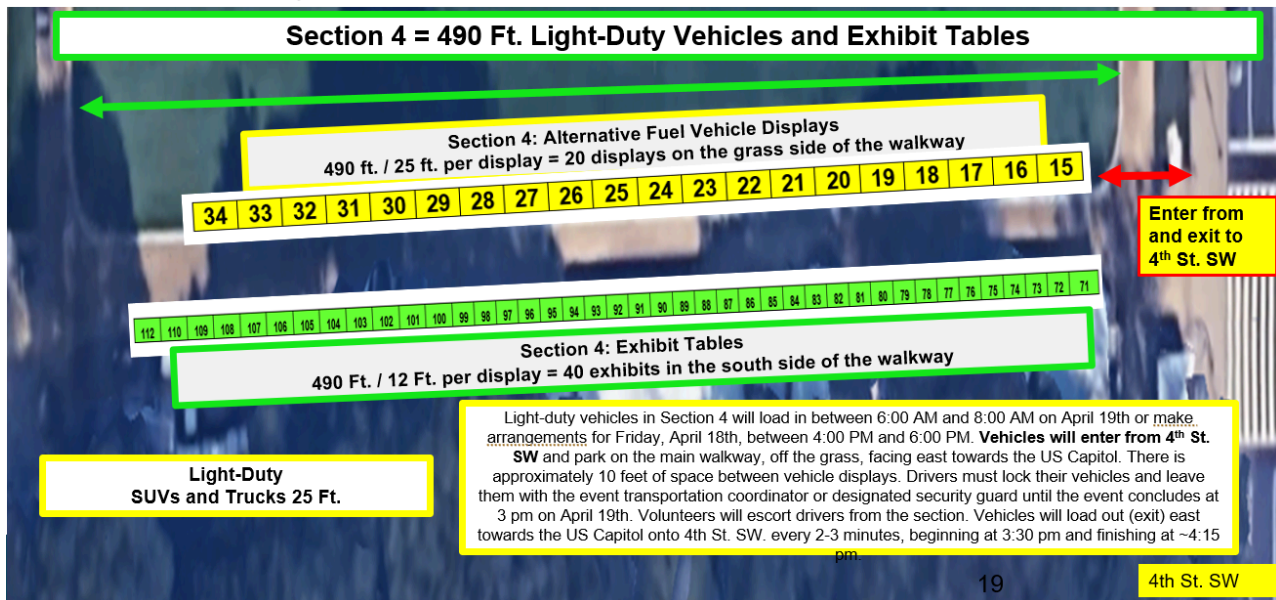
**GWRCCC Earth Day 5K Walk, Alternative Fuel Vehicle Display & Green Expo**  
**Section 2**

The Green Expo Section 2 exhibit area will be located on the main walkway between 3<sup>rd</sup> St. SW on the east and 4<sup>th</sup> St. SW on the west side.



**GWRCCC Earth Day 5K Walk, Alternative Fuel Vehicle Display & Green Expo**  
**Section 4**

The Section 4 Alternative Fuel Vehicle Displays and Green Expo Exhibits will be on the walkways, off the grass, between 4<sup>th</sup> St. SW on the east and the crossover walkway on the west side (Washington Monument). The vehicles will line up against the turf, and the exhibit tables will line up on the south side of the walkway.







## Public Transportation and Parking

### Parking

The Mall has limited public parking. To celebrate Earth Day, recognize the NPS's sustainability goals, and take advantage of the opportunity to pack light, please consider taking the Metro. (see NPS\* Sec.4.14.5: Alternative Transportation)

If you need to drive, there are several parking options provided below. Apps like Spot Hero (<https://spothero.com/destination/washington-dc/washington-monument-parking>) can be helpful. Parking at a shopping center or other public area and taking an Uber/Lyft into the Mall area is also an option.

**Metro** ([www.wmata.com/rider-guide/stations](http://www.wmata.com/rider-guide/stations))

- **Closest to the Event:** Federal Center SW Metro station is located at 3rd and D Streets, SW,
- Union Station: Located at First Street, NW, and Massachusetts Avenue
- Capitol South: Located at First Street between C and D Streets, SE
- L'Enfant Plaza: Located at Maryland Avenue and 7th Street, SW
- Archives-Navy Memorial: Located at Pennsylvania Avenue and 7th Street, NW
- Smithsonian: 12<sup>th</sup> Street at Jefferson Dr. SW (Mall entrance)
- Federal Triangle: Located along 12th Street between Pennsylvania and Constitution avenues, NW

### Free parking

- Hains Point: Located in East Potomac Park, this lot has about 400 free parking spaces
- Accessible parking: Located near the Washington Monument, the Thomas Jefferson, Lincoln, Korean War Veterans, and Vietnam Veterans Memorials

### Public Garages

- L'Enfant Plaza East Garage: Located at 840 D St. SW
- District Wharf Garage: Located at Sutton Square SW
- The Wharf Garage 3: Located at 602 Water St. SW
- Federal Center Plaza Ph 1 Garage: Located at 398 6th St. SW

### Hotels with Valet Parking

- Mandarin Oriental Hotel: Located at 1330 Maryland Ave. SW
- Intercontinental Hotel: Located at 801 Wharf St. SW
- Hilton DC National Mall Hotel: Located at 480 L'Enfant Plaza SW



- Hyatt House: Located at 725 Wharf St. SW

#### **Other Parking Options**

- Crystal Parking Lot: Located at 300A 12th St. SW
- Ronald Reagan Building Garage: Located at 1300 Pennsylvania Ave. NW